

Glanford Ave between Vanalman Ave and Judah St
February 25, 2020 To February 27, 2020



The data presented here is for information purposes only and should not be considered authoritative for construction, geotechnical, engineering, navigational, legal, or other site-specific uses. The information shared is owned by the Transportation Division of the Engineering Department at the District of Saanich. Accuracy is not guaranteed.

Start Date: 24-Feb-20
 Start Time: 0:01
 Station ID: M0017-03

Location 1: Glanford Ave between Vanalman Ave and Judah St

Note:

DATE:	February 24, 2020		February 25, 2020		February 26, 2020		February 27, 2020		February 28, 2020		WK AVG		WK AVG	HOURLY
	MON		TUE		WED		THURS		FRI				CH 1+2	%
Time:	NB	SB	NB	SB	NB	SB	NB	SB	NB	SB	NB	SB		
12-1 AM			13	23	22	33	11	27			15	28	43	0.4%
1-2 AM			10	5	10	14	11	10			10	10	20	0.2%
2-3 AM			11	6	15	6	16	8			14	7	21	0.2%
3-4 AM			19	16	20	14	16	14			18	15	33	0.3%
4-5 AM			24	10	32	9	29	11			28	10	38	0.4%
5-6 AM			72	19	71	26	76	27			73	24	97	1.0%
6-7 AM			157	69	156	74	163	80			159	74	233	2.4%
7-8 AM			348	166	366	187	366	162			360	172	532	5.6%
8-9 AM			466	342	421	317	451	366			446	342	788	8.2%
9-10 AM			244	227	324	291	293	272			287	263	550	5.7%
10-11 AM			260	228	265	271	298	313			274	271	545	5.7%
11-12 PM			281	276	276	295	305	332			287	301	588	6.1%
12-1 PM			285	277	290	284	296	310			290	290	581	6.1%
1-2 PM			263	292	325	307	324	323			304	307	611	6.4%
2-3 PM			306	378	345	408	326	407			326	398	723	7.6%
3-4 PM			450	483	519	487	468	501			479	490	969	10.1%
4-5 PM			343	539	420	510	359	541			374	530	904	9.4%
5-6 PM			285	436	338	477	321	517			315	477	791	8.3%
6-7 PM			233	289	222	304	244	308			233	300	533	5.6%
7-8 PM			134	190	165	197	152	226			150	204	355	3.7%
8-9 PM			121	146	122	146	138	127			127	140	267	2.8%
9-10 PM			67	78	94	105	84	114			82	99	181	1.9%
10-11 PM			54	66	57	58	40	62			50	62	112	1.2%
11-12 AM			28	37	14	28	34	46			25	37	62	0.7%
LANES			4474	4598	4889	4848	4821	5104			4728	4850	9578	100.0%
TOTAL			9072		9737		9925				9580			
	MON		TUE		WED		THURS		FRI	WK AVG				

PEAK HOUR					TOTAL VEHICALS-PEAK PERIODS		2 HOUR PEAK INTERVALS			
MAX. 7 - 9 am PEAK HOUR	788	⇒	8.2%	between 8-9 AM	4184	⇒ 6 HR TOTAL	2 HR AM (7 - 9 AM)			
MAX. 7 - 11 am PEAK HOUR	788	⇒	8.2%	between 8-9 AM	3015	⇒ 4 HR TOTAL	VEH / HR	VEH / 2HR	2 HR %	
							7-8 AM	532	1319	13.8%
							8-9 AM	788		
MAX. 11 am - 1 pm PEAK HOUR	588	⇒	6.1%	between 11-12 PM	24 HOUR FACTORS					
MAX. 11 am - 3 pm PEAK HOUR	723	⇒	7.6%	between 2-3 PM						
MAX. 4 - 6 pm PEAK HOUR	904	⇒	9.4%	between 4-5 PM						
MAX. 3 - 6 pm PEAK HOUR	969	⇒	10.1%	between 3-4 PM	2.29	⇒ 6-24 HR FACT.	2 HR NOON (11 - 1 PM)			
					3.18	⇒ 4-24 HR FACT.	VEH / HR	VEH / 2HR	2 HR %	
							11-12 PM	588	1169	12.2%
							12-1 PM	581		
							2 HR PM (4 - 6 PM)			
							VEH / HR	VEH / 2HR	2 HR %	
							4-5 PM	904	1695	17.7%
							5-6 PM	791		

Glanford Ave between Vanalman Ave and Judah St

Northbound

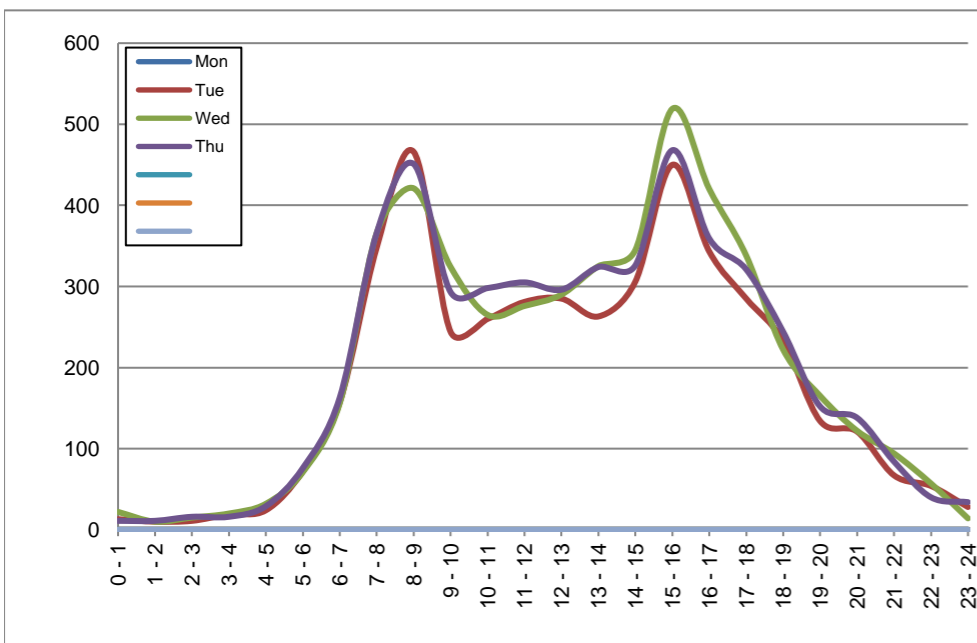
February 24, 2020 to February 27, 2020

Hourly Volumes

Time Period	Mon	Tue	Wed	Thu			
	Feb 24	Feb 25	Feb 26	Feb 27			
0 - 1		13	22	11			
1 - 2		10	10	11			
2 - 3		11	15	16			
3 - 4		19	20	16			
4 - 5		24	32	29			
5 - 6		72	71	76			
6 - 7		157	156	163			
7 - 8		348	366	366			
8 - 9		466	421	451			
9 - 10		244	324	293			
10 - 11		260	265	298			
11 - 12		281	276	305			
12 - 13		285	290	296			
13 - 14		263	325	324			
14 - 15		306	345	326			
15 - 16		450	519	468			
16 - 17		343	420	359			
17 - 18		285	338	321			
18 - 19		233	222	244			
19 - 20		134	165	152			
20 - 21		121	122	138			
21 - 22		67	94	84			
22 - 23		54	57	40			
23 - 24		28	14	34			
Day Total		4474	4889	4821			

15-Minute Volumes

Time Start	Mon	Tue	Wed	Thu				Time Start	Mon	Tue	Wed	Thu			
	Feb 24	Feb 25	Feb 26	Feb 27					Feb 24	Feb 25	Feb 26	Feb 27			
0:00		3	6	3				12:00		66	77	80			
0:15		3	7	2				12:15		71	88	65			
0:30		2	6	2				12:30		71	72	64			
0:45		5	3	4				12:45		77	53	87			
1:00		1	2	0				13:00		63	76	81			
1:15		1	4	3				13:15		67	74	81			
1:30		7	3	3				13:30		61	90	78			
1:45		1	1	5				13:45		72	85	84			
2:00		2	2	2				14:00		75	75	96			
2:15		2	3	4				14:15		63	92	70			
2:30		0	3	3				14:30		80	81	67			
2:45		7	7	7				14:45		88	97	93			
3:00		4	4	2				15:00		115	125	100			
3:15		1	1	6				15:15		135	151	148			
3:30		6	6	1				15:30		106	135	104			
3:45		8	9	7				15:45		94	108	116			
4:00		3	10	3				16:00		82	111	83			
4:15		10	6	7				16:15		80	110	82			
4:30		7	6	6				16:30		105	99	87			
4:45		4	10	13				16:45		76	100	107			
5:00		10	12	12				17:00		75	89	84			
5:15		17	15	16				17:15		70	95	83			
5:30		21	14	23				17:30		70	88	85			
5:45		24	30	25				17:45		70	66	69			
6:00		34	31	30				18:00		72	42	66			
6:15		34	30	38				18:15		59	63	70			
6:30		38	44	44				18:30		47	53	44			
6:45		51	51	51				18:45		55	64	64			
7:00		45	50	45				19:00		45	50	36			
7:15		75	88	86				19:15		37	42	50			
7:30		104	97	102				19:30		31	40	39			
7:45		124	131	133				19:45		21	33	27			
8:00		107	109	114				20:00		31	44	38			
8:15		124	108	113				20:15		39	31	38			
8:30		134	100	135				20:30		25	22	28			
8:45		101	104	89				20:45		26	25	34			
9:00		63	113	69				21:00		22	27	23			
9:15		58	76	68				21:15		16	31	26			
9:30		56	73	76				21:30		12	18	16			
9:45		67	62	80				21:45		17	18	19			
10:00		67	55	78				22:00		17	11	11			
10:15		60	71	75				22:15		15	20	10			
10:30		57	68	67				22:30		10	10	7			
10:45		76	71	78				22:45		12	16	12			
11:00		76	73	77				23:00		14	3	10			
11:15		75	57	89				23:15		4	3	9			
11:30		57	77	75				23:30		2	3	10			
11:45		73	69	64				23:45		8	5	5			



Site notes:

Glanford Ave between Vanalman Ave and Judah St

Southbound

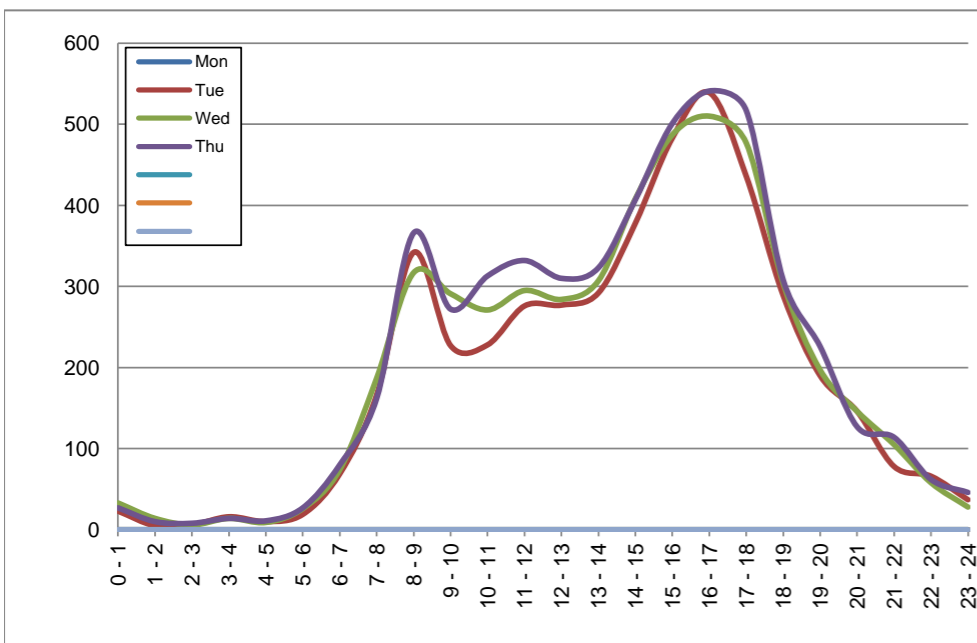
February 24, 2020 to February 27, 2020

Hourly Volumes

Time Period	Mon	Tue	Wed	Thu			
	Feb 24	Feb 25	Feb 26	Feb 27			
0 - 1		23	33	27			
1 - 2		5	14	10			
2 - 3		6	6	8			
3 - 4		16	14	14			
4 - 5		10	9	11			
5 - 6		19	26	27			
6 - 7		69	74	80			
7 - 8		166	187	162			
8 - 9		342	317	366			
9 - 10		227	291	272			
10 - 11		228	271	313			
11 - 12		276	295	332			
12 - 13		277	284	310			
13 - 14		292	307	323			
14 - 15		378	408	407			
15 - 16		483	487	501			
16 - 17		539	510	541			
17 - 18		436	477	517			
18 - 19		289	304	308			
19 - 20		190	197	226			
20 - 21		146	146	127			
21 - 22		78	105	114			
22 - 23		66	58	62			
23 - 24		37	28	46			
Day Total		4598	4848	5104			

15-Minute Volumes

Time Start	Mon	Tue	Wed	Thu				Time Start	Mon	Tue	Wed	Thu			
	Feb 24	Feb 25	Feb 26	Feb 27					Feb 24	Feb 25	Feb 26	Feb 27			
0:00		11	14	11				12:00		65	74	84			
0:15		8	8	6				12:15		64	80	78			
0:30		3	7	3				12:30		68	75	78			
0:45		1	4	7				12:45		80	55	70			
1:00		2	5	1				13:00		61	69	82			
1:15		1	3	1				13:15		75	71	91			
1:30		1	3	3				13:30		76	83	73			
1:45		1	3	5				13:45		80	84	77			
2:00		3	1	3				14:00		81	97	87			
2:15		2	1	1				14:15		93	108	107			
2:30		0	1	2				14:30		107	93	109			
2:45		1	3	2				14:45		97	110	104			
3:00		8	4	7				15:00		116	128	139			
3:15		2	5	0				15:15		123	110	97			
3:30		2	0	2				15:30		111	118	138			
3:45		4	5	5				15:45		133	131	127			
4:00		1	1	2				16:00		138	119	145			
4:15		2	0	2				16:15		124	130	128			
4:30		4	5	2				16:30		141	149	138			
4:45		3	3	5				16:45		136	112	130			
5:00		3	4	5				17:00		143	139	159			
5:15		5	6	7				17:15		99	123	134			
5:30		4	9	8				17:30		108	108	112			
5:45		7	7	7				17:45		86	107	112			
6:00		13	15	12				18:00		94	119	108			
6:15		19	17	16				18:15		73	66	77			
6:30		14	18	23				18:30		57	57	71			
6:45		23	24	29				18:45		65	62	52			
7:00		38	40	34				19:00		56	65	48			
7:15		28	27	29				19:15		56	54	65			
7:30		47	59	42				19:30		40	33	60			
7:45		53	61	57				19:45		38	45	53			
8:00		93	70	94				20:00		41	39	35			
8:15		123	67	134				20:15		46	28	31			
8:30		72	76	95				20:30		29	43	27			
8:45		54	104	43				20:45		30	36	34			
9:00		50	94	61				21:00		31	34	37			
9:15		47	61	80				21:15		17	26	33			
9:30		58	72	64				21:30		13	22	25			
9:45		72	64	67				21:45		17	23	19			
10:00		56	59	62				22:00		22	20	20			
10:15		42	64	79				22:15		20	16	21			
10:30		60	72	80				22:30		14	9	12			
10:45		70	76	92				22:45		10	13	9			
11:00		65	77	85				23:00		15	10	16			
11:15		76	73	70				23:15		14	10	13			
11:30		79	66	89				23:30		6	5	9			
11:45		56	79	88				23:45		2	3	8			



Site notes:

Vehicle Speed Summary

Saanich Engineering Department

Count Id: [M0017-03](#)

Filename: [Glanford Ave between Vanalman Ave and Judah St-Feb-2020.xlsm](#)

Location: Glanford Ave between Vanalman Ave and Judah St

Note:

Direction: **North-South**

Dates: **February 25, 2020 To February 27, 2020**

Filtered data

AVG. SPEED	25 mph	40 km/h
50 % SPEED	25 mph	40 km/h
85 % SPEED	29 mph	47 km/h
95 % SPEED	32 mph	52 km/h

Location Map



Glanford Ave between Vanalman Ave and Judah St

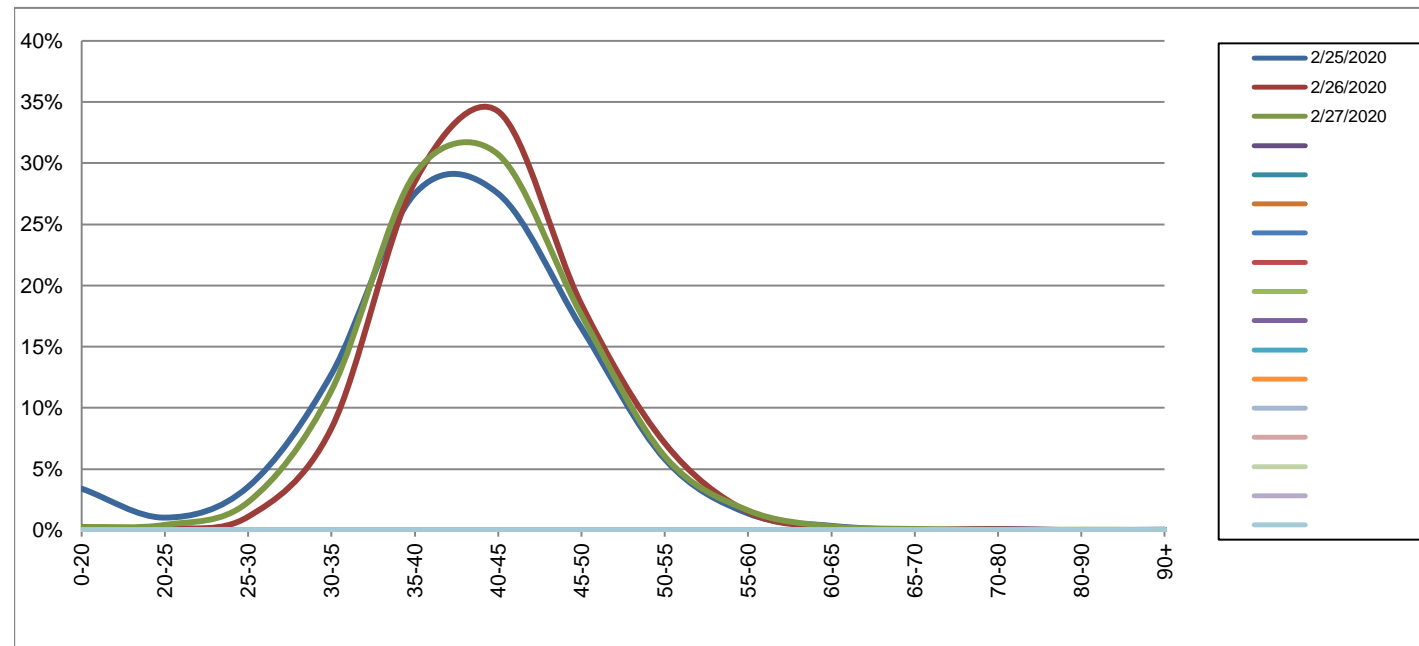
Northbound

February 25, 2020 to February 27, 2020

Daily Speed Bin Percentages															Daily Speed Bin Volumes														Total	Avg.
Bin #	1	2	3	4	5	6	7	8	9	10	11	12	13	14	1	2	3	4	5	6	7	8	9	10	11	12	13	14		
Bin Speeds	0-20	20-25	25-30	30-35	35-40	40-45	45-50	50-55	55-60	60-65	65-70	70-80	80-90	90+	0-20	20-25	25-30	30-35	35-40	40-45	45-50	50-55	55-60	60-65	65-70	70-80	80-90	90+	Volume	Speed
2/25/2020	3.4%	1.0%	3.6%	12.8%	27.5%	27.5%	16.5%	5.8%	1.4%	0.4%	0.0%	0.1%	0.0%	0.0%	152	46	159	571	1231	1231	740	260	61	16	1	4	0	2	4474	40
2/26/2020	0.3%	0.1%	1.1%	8.3%	28.5%	34.2%	18.4%	7.1%	1.5%	0.2%	0.1%	0.1%	0.0%	0.0%	13	7	54	408	1392	1674	902	348	73	11	3	4	0	0	4889	42
2/27/2020	0.2%	0.4%	2.3%	11.4%	29.1%	30.7%	17.6%	6.0%	1.6%	0.3%	0.1%	0.0%	0.0%	0.0%	12	21	111	551	1404	1481	848	291	78	15	5	1	2	1	4821	41
Total	1.2%	0.5%	2.3%	10.8%	28.4%	30.9%	17.6%	6.3%	1.5%	0.3%	0.1%	0.1%	0.0%	0.0%	177	74	324	1530	4027	4386	2490	899	212	42	9	9	2	3	14184	41

Speed Data Summary

Bin #	1	2	3	4	5	6	7	8	9	10	11	12	13	14	Total
Bin Speeds	0-20	20-25	25-30	30-35	35-40	40-45	45-50	50-55	55-60	60-65	65-70	70-80	80-90	90+	
Survey Total	177	74	324	1530	4027	4386	2490	899	212	42	9	9	2	3	14184
% Total	1.2%	0.5%	2.3%	10.8%	28.4%	30.9%	17.6%	6.3%	1.5%	0.3%	0.1%	0.1%	0.0%	0.0%	100%
Accumulated %	1.2%	1.8%	4.1%	14.8%	43.2%	74.2%	91.7%	98.0%	99.5%	99.8%	99.9%	100.0%	100.0%	100%	
Inverse Accum. %	98.8%	98.2%	95.9%	85.2%	56.8%	25.8%	8.3%	2.0%	0.5%	0.2%	0.1%	0.0%	0.0%	0.0%	
Average Speed	41 KM/H														



Site notes:

Glanford Ave between Vanalman Ave and Judah St

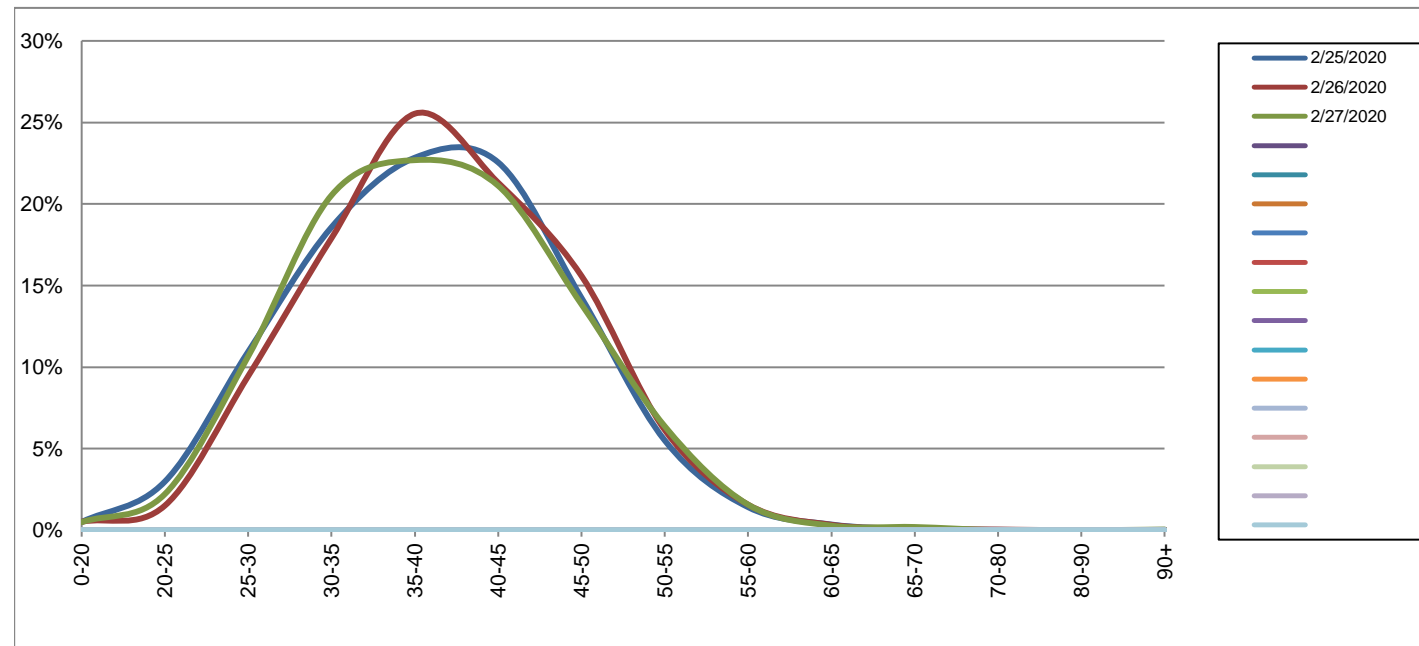
Southbound

February 25, 2020 to February 27, 2020

Daily Speed Bin Percentages															Daily Speed Bin Volumes														Total	Avg.
Bin #	1	2	3	4	5	6	7	8	9	10	11	12	13	14	1	2	3	4	5	6	7	8	9	10	11	12	13	14	Volume	Speed
Bin Speeds	0-20	20-25	25-30	30-35	35-40	40-45	45-50	50-55	55-60	60-65	65-70	70-80	80-90	90+	0-20	20-25	25-30	30-35	35-40	40-45	45-50	50-55	55-60	60-65	65-70	70-80	80-90	90+		
2/25/2020	0.5%	3.0%	10.9%	18.6%	22.8%	22.6%	14.2%	5.5%	1.4%	0.3%	0.1%	0.0%	0.0%	0.0%	23	137	503	854	1050	1037	655	253	65	16	3	1	0	1	4598	39
2/26/2020	0.5%	1.5%	9.4%	17.9%	25.5%	21.3%	15.6%	6.1%	1.6%	0.3%	0.1%	0.0%	0.0%	0.0%	25	73	458	868	1238	1033	756	298	76	16	5	2	0	0	4848	39
2/27/2020	0.5%	2.2%	10.7%	20.5%	22.7%	21.1%	13.9%	6.4%	1.6%	0.3%	0.2%	0.0%	0.0%	0.0%	25	113	544	1048	1158	1078	707	325	80	14	10	0	0	2	5104	39
Total	0.5%	2.2%	10.3%	19.0%	23.7%	21.6%	14.6%	6.0%	1.5%	0.3%	0.1%	0.0%	0.0%	0.0%	73	323	1505	2770	3446	3148	2118	876	221	46	18	3	0	3	14550	39

Speed Data Summary

Bin #	1	2	3	4	5	6	7	8	9	10	11	12	13	14	Total
Bin Speeds	0-20	20-25	25-30	30-35	35-40	40-45	45-50	50-55	55-60	60-65	65-70	70-80	80-90	90+	
Survey Total	73	323	1505	2770	3446	3148	2118	876	221	46	18	3	0	3	14550
% Total	0.5%	2.2%	10.3%	19.0%	23.7%	21.6%	14.6%	6.0%	1.5%	0.3%	0.1%	0.0%	0.0%	0.0%	100%
Accumulated %	0.5%	2.7%	13.1%	32.1%	55.8%	77.4%	92.0%	98.0%	99.5%	99.8%	100.0%	100.0%	100.0%	100%	
Inverse Accum. %	99.5%	97.3%	86.9%	67.9%	44.2%	22.6%	8.0%	2.0%	0.5%	0.2%	0.0%	0.0%	0.0%	0.0%	
Average Speed	39 KM/H														



Site notes:

Glanford Ave between Vanalman Ave and Judah St

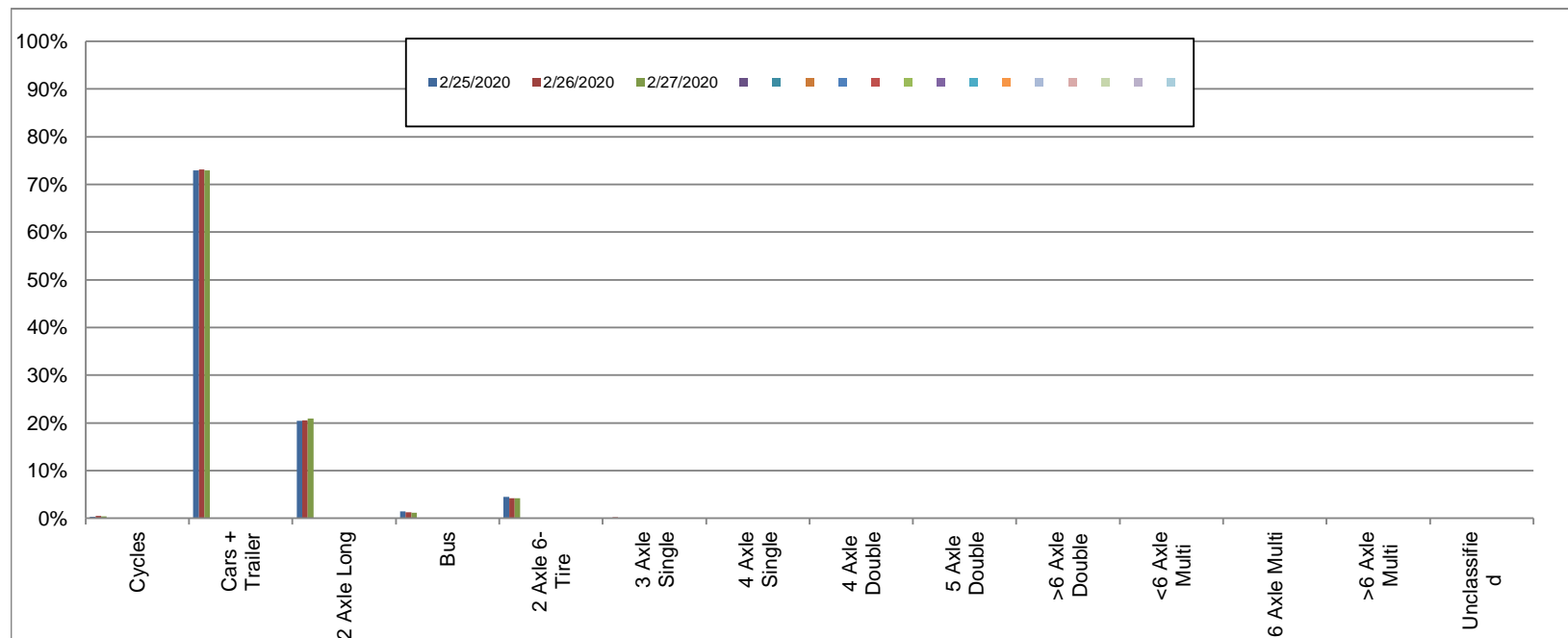
Northbound

February 25, 2020 to February 27, 2020

Daily Class Bin Percentages															Daily Class Bin Volumes														
Bin #	1	2	3	4	5	6	7	8	9	10	11	12	13	14	1	2	3	4	5	6	7	8	9	10	11	12	13	14	Total Volume
Bin Class	Cycles	Cars + Trailer	2 Axle Long	Bus	2 Axle 6-Tire	3 Axle Single	4 Axle Single	4 Axle Double	5 Axle Double	>6 Axle Double	<6 Axle Multi	6 Axle Multi	>6 Axle Multi	Unclassified	Cycles	Cars + Trailer	2 Axle Long	Bus	2 Axle 6-Tire	3 Axle Single	4 Axle Single	4 Axle Double	5 Axle Double	>6 Axle Double	<6 Axle Multi	6 Axle Multi	>6 Axle Multi	Unclassified	
2/25/2020	0.3%	73.0%	20.5%	1.4%	4.5%	0.1%	0.0%	0.1%	0.1%	0.0%	0.0%	0.0%	0.0%	0.1%	12	3264	916	63	200	6	1	4	3	0	0	0	0	5	4474
2/26/2020	0.5%	73.1%	20.5%	1.2%	4.2%	0.2%	0.0%	0.1%	0.0%	0.0%	0.0%	0.0%	0.0%	0.1%	25	3574	1004	60	205	8	1	7	2	0	0	0	0	3	4889
2/27/2020	0.4%	73.0%	21.0%	1.2%	4.2%	0.0%	0.0%	0.1%	0.0%	0.0%	0.0%	0.0%	0.0%	0.0%	21	3517	1010	57	204	2	1	5	2	0	0	0	1	1	4821
Total	0.4%	73.0%	20.7%	1.3%	4.3%	0.1%	0.0%	0.1%	0.0%	0.0%	0.0%	0.0%	0.0%	0.1%	58	10355	2930	180	609	16	3	16	7	0	0	0	1	9	14184

Class Data Summary

Bin #	1	2	3	4	5	6	7	8	9	10	11	12	13	14	Total Volume
Bin Class	Cycles	Cars + Trailer	2 Axle Long	Bus	2 Axle 6-Tire	3 Axle Single	4 Axle Single	4 Axle Double	5 Axle Double	>6 Axle Double	<6 Axle Multi	6 Axle Multi	>6 Axle Multi	Unclassified	Total Volume
Survey Total	58	10355	2930	180	609	16	3	16	7	0	0	0	1	9	14184
% Total	0.4%	73.0%	20.7%	1.3%	4.3%	0.1%	0.0%	0.1%	0.0%	0.0%	0.0%	0.0%	0.0%	0.1%	100%
Accumulated %	0.4%	73.4%	94.1%	95.3%	99.6%	99.7%	99.8%	99.9%	99.9%	99.9%	99.9%	99.9%	99.9%	100.0%	
Inv. Accum. %	99.6%	26.6%	5.9%	4.7%	0.4%	0.3%	0.2%	0.1%	0.1%	0.1%	0.1%	0.1%	0.1%	0.0%	



Classification Descriptions

Bin #	Bin Description
1	Motorcycles
2	Passenger cars, including those with recreational trailers
3	2-axle pick-ups, vans, and RVs, including those with recreational trailers
4	Buses
5	2-axle, 6-tire single units
6	3-axle single units
7	4-axle single units
8	3-axle or 4-axle double unit
9	5-axle double unit
10	6-, 7-, or 8-axle double unit
11	5-axle multiple unit
12	6-axle multiple unit
13	7-or-more-axle multiple unit
14	Vehicles that could not be classified

Site notes:

Glanford Ave between Vanalman Ave and Judah St

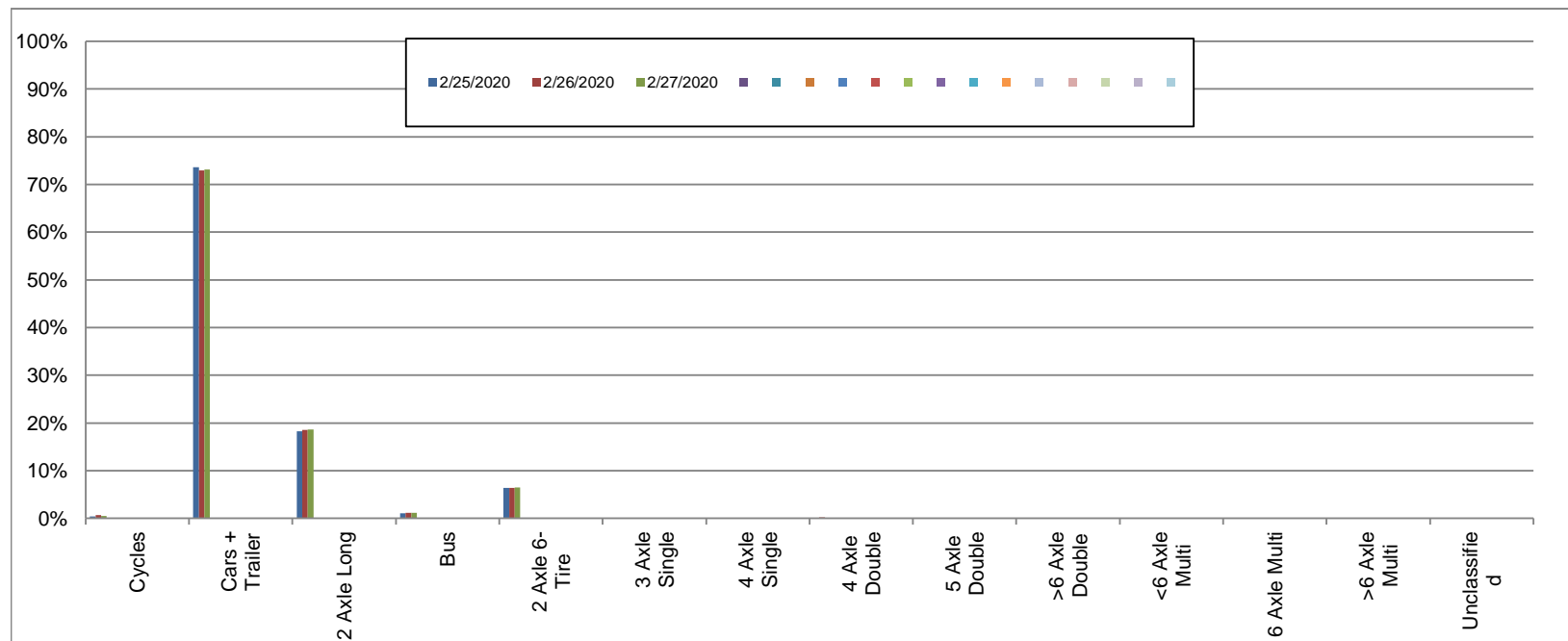
Southbound

February 25, 2020 to February 27, 2020

Daily Class Bin Percentages															Daily Class Bin Volumes														
Bin #	1	2	3	4	5	6	7	8	9	10	11	12	13	14	1	2	3	4	5	6	7	8	9	10	11	12	13	14	Total Volume
Bin Class	Cycles	Cars + Trailer	2 Axle Long	Bus	2 Axle 6-Tire	3 Axle Single	4 Axle Single	4 Axle Double	5 Axle Double	>6 Axle Double	<6 Axle Multi	6 Axle Multi	>6 Axle Multi	Unclassified	Cycles	Cars + Trailer	2 Axle Long	Bus	2 Axle 6-Tire	3 Axle Single	4 Axle Single	4 Axle Double	5 Axle Double	>6 Axle Double	<6 Axle Multi	6 Axle Multi	>6 Axle Multi	Unclassified	
2/25/2020	0.4%	73.6%	18.2%	1.1%	6.4%	0.1%	0.0%	0.1%	0.0%	0.0%	0.0%	0.0%	0.0%	0.0%	20	3383	838	50	294	5	0	5	1	0	0	0	0	2	4598
2/26/2020	0.6%	73.0%	18.5%	1.2%	6.4%	0.1%	0.0%	0.2%	0.0%	0.0%	0.0%	0.0%	0.0%	31	3538	897	56	308	5	1	8	2	0	0	0	0	0	2	4848
2/27/2020	0.5%	73.1%	18.6%	1.1%	6.5%	0.0%	0.0%	0.1%	0.0%	0.0%	0.0%	0.0%	0.0%	24	3732	949	57	332	1	0	5	0	0	0	0	0	0	4	5104
Total	0.5%	73.2%	18.4%	1.1%	6.4%	0.1%	0.0%	0.1%	0.0%	0.0%	0.0%	0.0%	0.0%	0.1%	75	10653	2684	163	934	11	1	18	3	0	0	0	0	8	14550

Class Data Summary

Bin #	1	2	3	4	5	6	7	8	9	10	11	12	13	14	Total Volume
Bin Class	Cycles	Cars + Trailer	2 Axle Long	Bus	2 Axle 6-Tire	3 Axle Single	4 Axle Single	4 Axle Double	5 Axle Double	>6 Axle Double	<6 Axle Multi	6 Axle Multi	>6 Axle Multi	Unclassified	Total Volume
Survey Total	75	10653	2684	163	934	11	1	18	3	0	0	0	0	8	14550
% Total	0.5%	73.2%	18.4%	1.1%	6.4%	0.1%	0.0%	0.1%	0.0%	0.0%	0.0%	0.0%	0.0%	0.1%	100%
Accumulated %	0.5%	73.7%	92.2%	93.3%	99.7%	99.8%	99.8%	99.9%	99.9%	99.9%	99.9%	99.9%	99.9%	100.0%	
Inv. Accum. %	99.5%	26.3%	7.8%	6.7%	0.3%	0.2%	0.2%	0.1%	0.1%	0.1%	0.1%	0.1%	0.1%	0.0%	



Classification Descriptions

Bin #	Bin Description
1	Motorcycles
2	Passenger cars, including those with recreational trailers
3	2-axle pick-ups, vans, and RVs, including those with recreational trailers
4	Buses
5	2-axle, 6-tire single units
6	3-axle single units
7	4-axle single units
8	3-axle or 4-axle double unit
9	5-axle double unit
10	6-, 7-, or 8-axle double unit
11	5-axle multiple unit
12	6-axle multiple unit
13	7-or-more-axle multiple unit
14	Vehicles that could not be classified

Site notes: